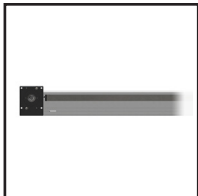
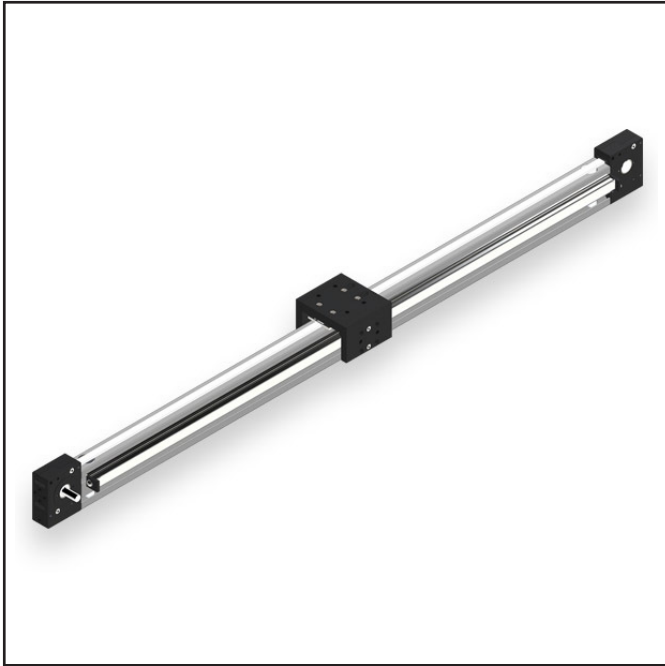




BELT DRIVEN ACTUATORS > MSA-R15 ACTUATOR

MSA-R15 ACTUATOR

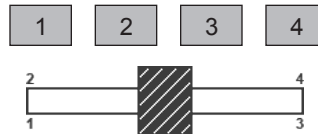


MSA-R15 OPTIONS

SHAFT TYPE

- Single
- Double

DRIVE SHAFT LOCATION



TRAVELS

(Min 150mm - Max 5775mm)

OPTIONS FOR:

- Motor Mounting
- Sensors
- Gearbox

HOW TO BUILD YOUR MSA-R15:



Macron Solutions Since 1987

MACRON DYNAMICS, INC.
 100 Phyllis Drive
 Croydon, PA 19021

1-800-MACRON-1 (1-800-622-7661)
 Phone: 267-557-3590
 Fax: 215-443-0981

© 2014 MACRON DYNAMICS, INC.

Macron Guarantee

All Macron actuators and belt drives are covered by our
 1-Year Warranty



BELT DRIVEN ACTUATORS > MSA-R15 ACTUATOR

MSA-R15 ACTUATOR

SPECIFICATIONS

Specifications

Motion	Horizontal or Vertical
Max Speed - horizontal [vertical] - mm / sec	5000 [5000]
Max Load - horizontal [vertical] - lbs.	150 [75]
Repeatability - mm	+/-0.025
Moment Load Max - in. - lbs. [Nm]	310 [35]
Positional Accuracy - mm / meter	+/- 0.4
Acceleration max - G's	20
Beam Dimensions - mm	N/A
Motor Sizing Information	
Weight of Drive Pulley - oz. / kgs.	4.7 / 0.13
Weight of Idler Pulley - oz. / kgs.	4.3 / 0.12
Weight of Cart - lbs. / kgs.	0.8 / 0.36
Weight of Belt - kgs. based on travel selected	((Travel in meters x 2) + 0.32) x 0.04
Travel per Revolution - mm	105
Pulley Pitch Diameter - mm	33.42
Pulley Material / Width - mm	steel / 12
Breakaway Torque - oz. - in.	13 - 14
Coefficient Friction	0.05
Rolling Resistance - lbs. / kgs.	N/A

SPECIFICATIONS

Weight

Weight - min. travel unit (150 mm) - lbs. / kgs.	4.6 / 2.1
Weight - additional 25 mm of travel - lbs. / kgs.	0.21 / 0.10
Travels	
Standard Travels - min max - mm (25 mm increment)	150 / 5775

Features

- Extruded aluminum actuator body with T-slots for ease of mounting
- Easy to adjust belt tensioner
- One piece, machined and stress proof shafted pulley
- Zero backlash belt to pulley design
- Corrosion resistant components

Macron Solutions Since 1987

MACRON DYNAMICS, INC.
 100 Phyllis Drive
 Croydon, PA 19021
 © 2014 MACRON DYNAMICS, INC.

1-800-MACRON-1 (1-800-622-7661)
 Phone: 267-557-3590
 Fax: 215-443-0981

Macron Guarantee

All Macron actuators and belt drives are covered by our
 1-Year Warranty